



# CoreLine Waterproof

## WT120C LED40S/840 PSU L1200

Coreline Waterproof - - - 840 neutral white - Power supply unit

CoreLine waterproof delivers on the CoreLine promise of innovative, easy-to-use and high-quality luminaires. CoreLine waterproof products can directly replace traditional waterproof luminaires with fluorescent lamps ranging from 18W up to 58W. With its slim and stylish design, it continues to keep its well-known and appreciated architecture. Installation is quick and easy, all thanks to its efficient design. CoreLine waterproof provides better wide-beam light distribution for straightforward and effective lighting. Interact Ready luminaires with integrated wireless communications are also available in this range, ready to be used with Interact gateways, sensors and software.

### Product data

General Information		Protection class IEC	Safety class I
Number of light sources	1 pc	Glow-wire test	Temperature 850 °C, duration 30 s
Lamp family code	-	Flammability mark	For mounting on easily flammable surfaces
Beam angle of light source	120 °	CE mark	CE mark
Light source color	840 neutral white	ENEC mark	ENEC mark
Light source replaceable	No	UL mark	-
Number of gear units	1 unit	Warranty period	5 years
Driver/power unit/transformer	Power supply unit	Remarks	*-Per Lighting Europe guidance paper "Evaluating performance of LED based luminaires - January 2018": statistically there is no relevant difference in lumen maintenance between B50 and for example B10. Therefore the median useful life (B50) value also represents the B10 value.
Driver included	Yes	Constant light output	No
Optic type	-		
Optical cover/lens type	Polycarbonate bowl/cover		
Luminaire light beam spread	110°		
Emergency lighting	-		
Control interface	-		
Connection	Push-in connector 3-pole		
Cable	-		

# CoreLine Waterproof

Number of products on MCB of 16 A type B	24
EU RoHS compliant	Yes
Service tag	Yes
Product family code	WT120C [ Coreline Waterproof]
Unified glare rating CEN	24

## Operating and Electrical

Input Voltage	220 to 240 V
Input Frequency	50 to 60 Hz
Inrush current	8 A
Inrush time	0.060 ms
Power Factor (Min)	0.9

## Controls and Dimming

Dimmable	No
----------	----

## Mechanical and Housing

Housing Material	Polycarbonate
Reflector material	Steel
Optic material	-
Optical cover/lens material	Polycarbonate
Fixation material	Stainless steel
Optical cover/lens finish	Textured
Overall length	1250 mm
Overall width	87 mm
Overall height	96 mm
Color	Gray
Dimensions (Height x Width x Depth)	96 x 87 x 1250 mm (3.8 x 3.4 x 49.2 in)

## Approval and Application

Ingress protection code	IP65 [ Dust penetration-protected, jet-proof]
Mech. impact protection code	IK08 [ 5 J vandal-protected]

## Initial Performance (IEC Compliant)

Initial luminous flux (system flux)	4100 lm
Luminous flux tolerance	+/-10%
Initial LED luminaire efficacy	115 lm/W
Init. Corr. Color Temperature	4000 K
Init. Color Rendering Index	≥80
Initial chromaticity	(0.38, 0.38) SDCM <3
Initial input power	35.5 W
Power consumption tolerance	+/-10%

## Over Time Performance (IEC Compliant)

Control gear failure rate at median useful life 50000 h	5 %
Lumen maintenance at median useful life* 50000 h	L75

## Application Conditions

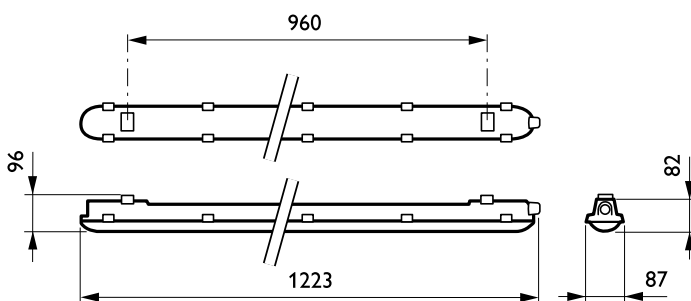
Ambient temperature range	-20 to +35 °C
Performance ambient temperature Tq	25 °C
Maximum dim level	Not applicable
Suitable for random switching	Yes

## Product Data

Full product code	871829184048000
Order product name	WT120C LED40S/840 PSU L1200
EAN/UPC - Product	8718291840480
Order code	910500453338
Numerator - Quantity Per Pack	1
Numerator - Packs per outer box	1
Material Nr. (12NC)	910500453338
Net Weight (Piece)	1.530 kg



## Dimensional drawing



CoreLine Waterproof WT120C

